

# elfa® Safety Top Track installation

The safety top track is the only part of the elfa® system that is fixed to the wall.

## Basic Tools For Assembly and Installation

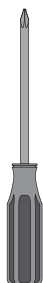
Please read all of the instructions before beginning assembly.



Level



Hand or Power Drill



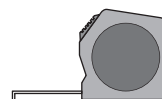
#2 Phillips Head Screwdriver



Drill Bits 1/8"/3mm, 5/16"/8mm, 3/8"/10mm



#2 Phillips Head Bit



Tape measure



Ladder or Step Stool

## Easy Hang Ventilated Shelving Components



### Safety Top Track

This is the only thing you need to screw into the wall

### Hanging Wall Band

Hangs in the track.

### Bracket for elfa Ventilated Shelf

Mounted in the hanging wall band.

### elfa Ventilated Shelf

Snaps into the brackets.

### Rod Holder

Mounted in the brackets to keep the Rod in place.

### Rod

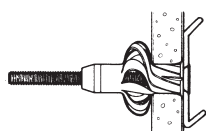
Available in different lengths and mounted using rod holders.



## Assembly Hardware for Safety Top Track



#2 bit



### Hollow wall installation (G5)

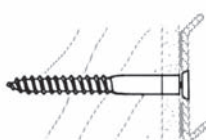
Used for 1/2"/10 mm or 5/8"/17 mm thick drywall. Use 3/8"/10 mm drill bit to drill hole. Insert dark blue anchor, remove and discard the gray spacer. Use #2 Phillips head bit to tighten the screw.



### Wood installation (R6)

Used for mounting into drywall over wood studs or directly into wood. Use 1/8"/3 mm drill bit to drill a pilot hole the length of the bit. Discard anchor. Use #2 Phillips head bit to tighten the screw.

## Other Installation Hardware for Special Wall Construction



### Hardware for 1 1/8-30mm thick walls (G6)

Used for 1 1/8-30 mm thick plaster or drywall. Use 3/8"/10 mm masonry drill bit to drill hole. Insert red anchor, remove and discard the gray spacer. Use #2 Phillips head bit to tighten the screw.



### Hardware for masonry walls (R6)

Used for mounting into masonry walls, concrete, brick, etc. Use 5/16"/8 mm masonry drill bit to drill hole. Insert light blue anchor. Use #2 Phillips head bit to tighten the screw.

## Easy Hang Installation - Safety Top Track

### Step 1. Position the Safety Top Track.

It is usually placed at ceiling or door height, but may be placed at any height.

### Step 2 . Level the Safety Top Track:

- Place the Safety Top Track at desired height, mark one hole in the middle, and take the Safety Top Track down.
- Begin drilling this hole with a 1/8"/3mm drill bit. If you hit wood, continue drilling the entire length of the bit. If you hit the hollow part of the wall, enlarge the hole with a 3/8"/10mm drill bit for the hollow wall anchors.
- Put the Safety Top Track up with one screw and tighten it enough to hold the Safety Top Track against the wall.
- To keep the Safety Top Track level while you mark all of the holes, place a level on the bottom of the Safety Top Track and adjust it as required.
- Take the Safety Top Track off of the wall.

### Step 3 . Drill all marked holes:

- Drill holes with a 1/8"/3 mm drill bit, assuming you are going into wood. If you hit wood, continue drilling the entire length of the bit.
- If you hit the hollow part of the wall, mark those holes with an X, reminding yourself you need to go back and drill a 3/8"/10 mm hole for the hollow wall anchors.
- To install a hollow wall anchor (dark blue), remove the screw from the anchor. Tap the dark blue anchor into the 3/8"/10 mm hole in the hollow part of the wall. Remove and discard the grey spacer.

### Step 4. Install the Safety Top Track:

Put the Safety Top Track up and insert and tighten all the screws.



**For the wood screws,** discard the light blue anchor and use a #2 Phillips head screwdriver bit and power drill to tighten the screw. Pulling the wood screw over a bar of soap before using it will make inserting the screw into the wood easier.

**For the hollow wall anchors,** use a #2 Phillips head screwdriver and tighten the screw. It is important to get this anchor very tight!! You will tighten this anchor until the screw stops turning. Once the Track is tight against the wall, you're finished.

## Assembly Ventilated Shelving



Fig. A

### Step 1

Install the Safety Top Track (see previous page).

### Step 2

Hanging Wall Band should be placed at a maximum of 36"/900 mm apart in wardrobes, 24"/600 mm apart for storage of heavy items (Fig. A) .



Fig. B

### Step 3

Place Ventilated Shelf Brackets in the Hanging Wall Band at the desired Shelf height (Fig. B).

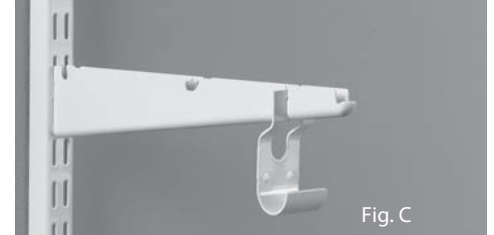


Fig. C

Snap the Rod Holders into their slots in the Brackets (Fig. C).

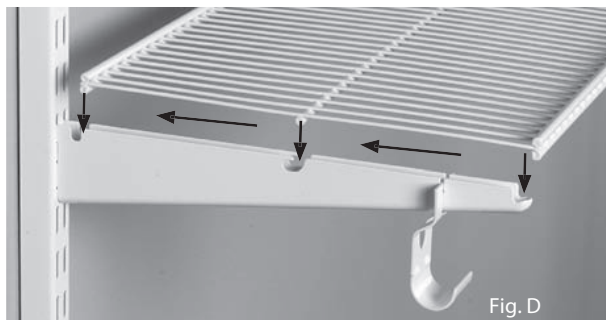


Fig. D

### Step 4

Place Ventilated Shelves over notches in the Ventilated Shelf Bracket. The end of the Shelf should extend 1/2"/10 mm past the side of the Bracket. Lock the shelf into place by pressing the middle part down and toward the wall (Fig. D). To unlock the Shelf, lift the back out of the slot and pull away from the wall. Snap the Rods into their Holders (Fig. E).

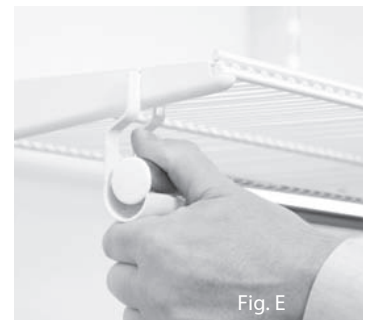


Fig. E

Store locations  
Online shopping  
Franchise opportunities

hsw.com.au  
Freecall 1300 666 616

